

4U4 Node Rack Server Chassis

Product Manual V1.0

Contents

1 Product Specifications	02
2 Server chassis images	03
3 Server chassis size	04
4 Server node size	05
5 Optional accessories	06

1 Product Specifications

Product code	K14033
Chassis Category	4U4 NODE
Material	SGCC1.2mm(Taiwan)
MB Form Factor	M-ATX (244x190mm) Mini-ATX(150x150mm) Support ≤244x190mm
Dimensions(D*W*H)	720 x 435 x 177 (mm) 28.35" x 17.13" x 6.97"
Nodes	4 node meet hot swap
Power Board	support 850w and hot swap, support Pmbus
Power Supply Type	3+1 Redundant
Indicators	motherboard shall prevail
Front Control	motherboard shall prevail
Node Cooling Fans	Middle: 2 x 8038(7500PWM) + 2 x 6038(Option)
HDD Backplane	16X pcie 4.0 To 16X pcie 4.0 / Wire or Riser Card
Expansion Slots	support GPU(Length: 350mm and below), support GPU(thickness: 62mm and below)
IPMI	IPMI(Option) or ODM(Option)
Rack Rails	P/N:0304100006(Option)
Net Weight	??kg
Gross Weight	??kg
Package Size(D*W*H)	890x605x327mm

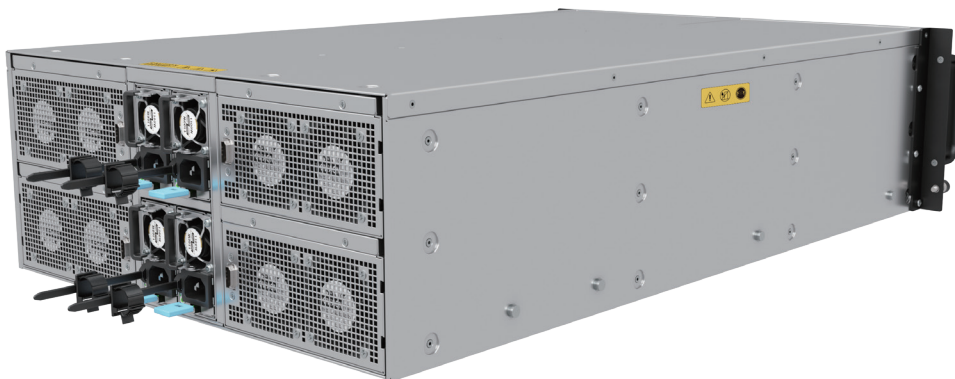
2 Server chassis images



Front View

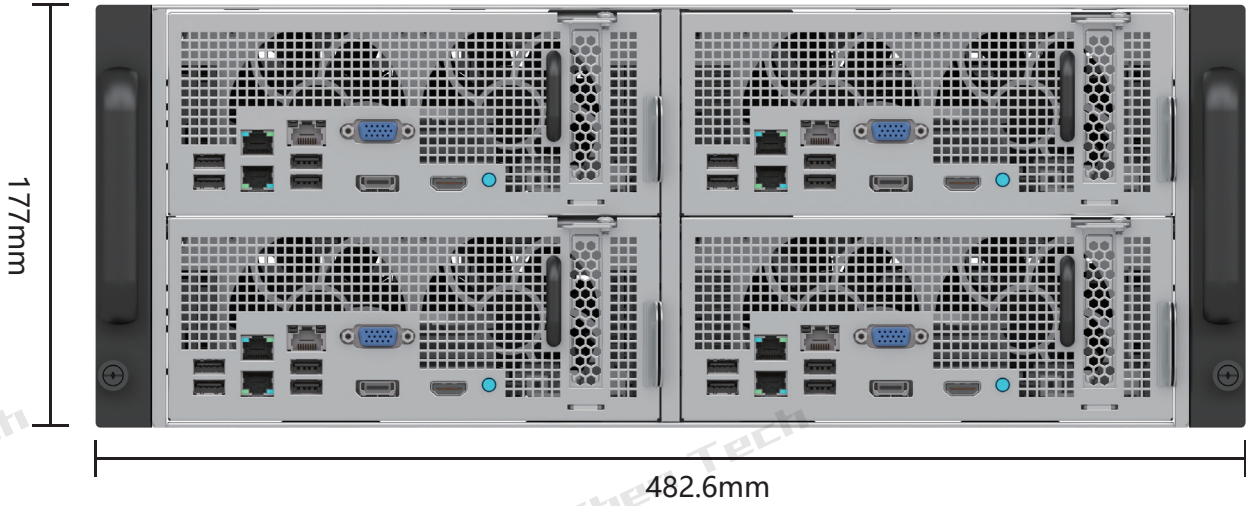


45° Side View

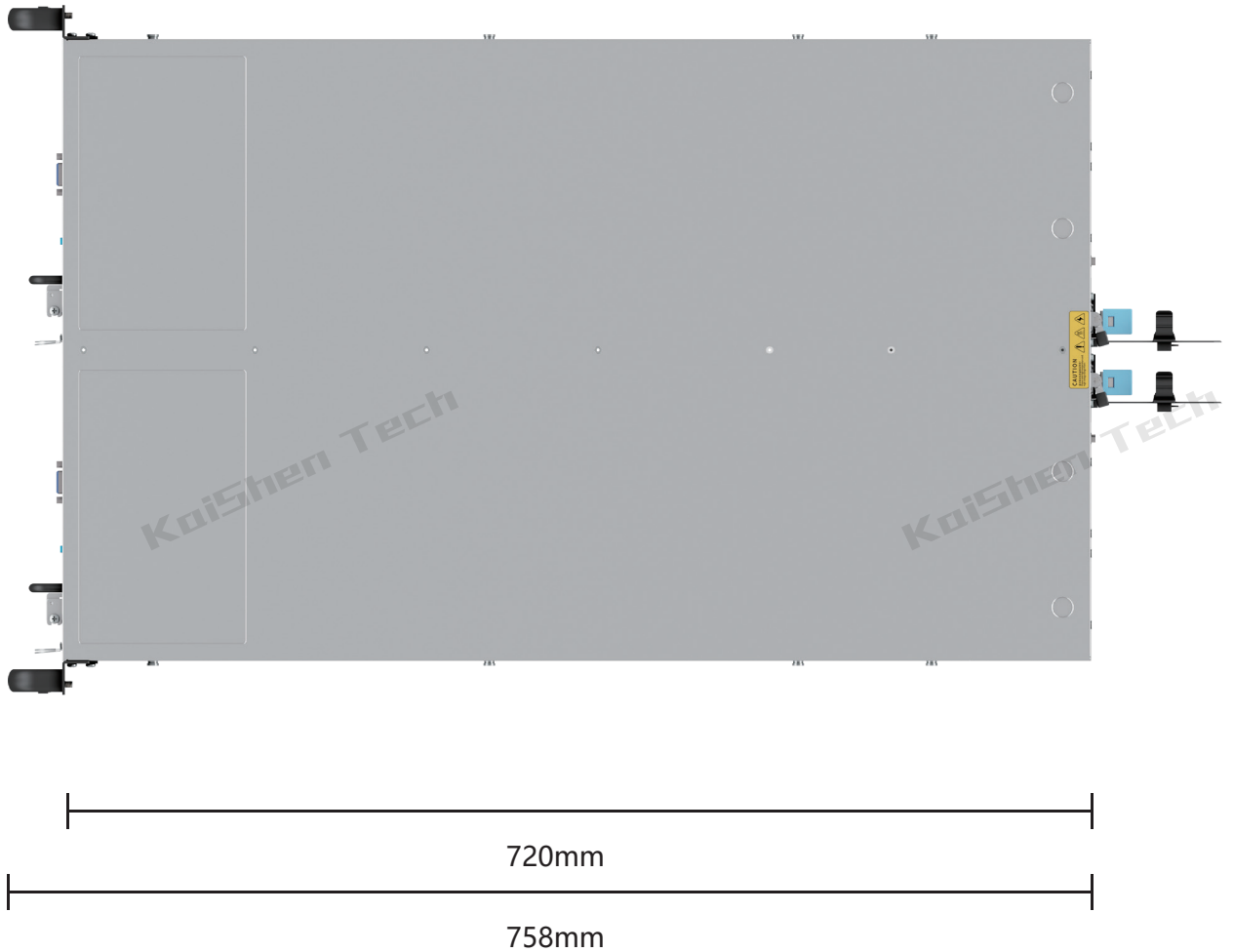


45° Rear View

3 Server chassis size

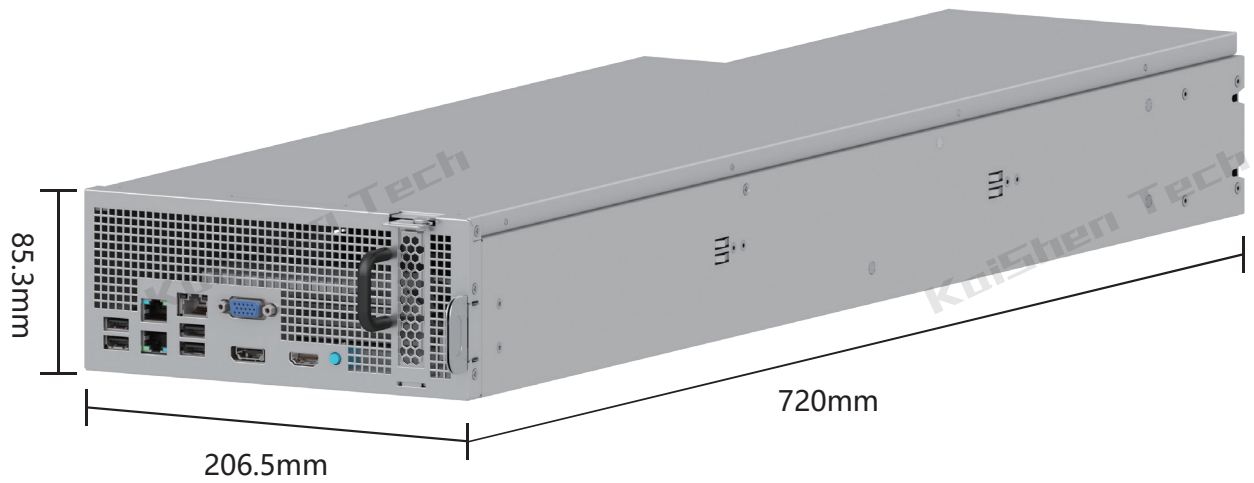
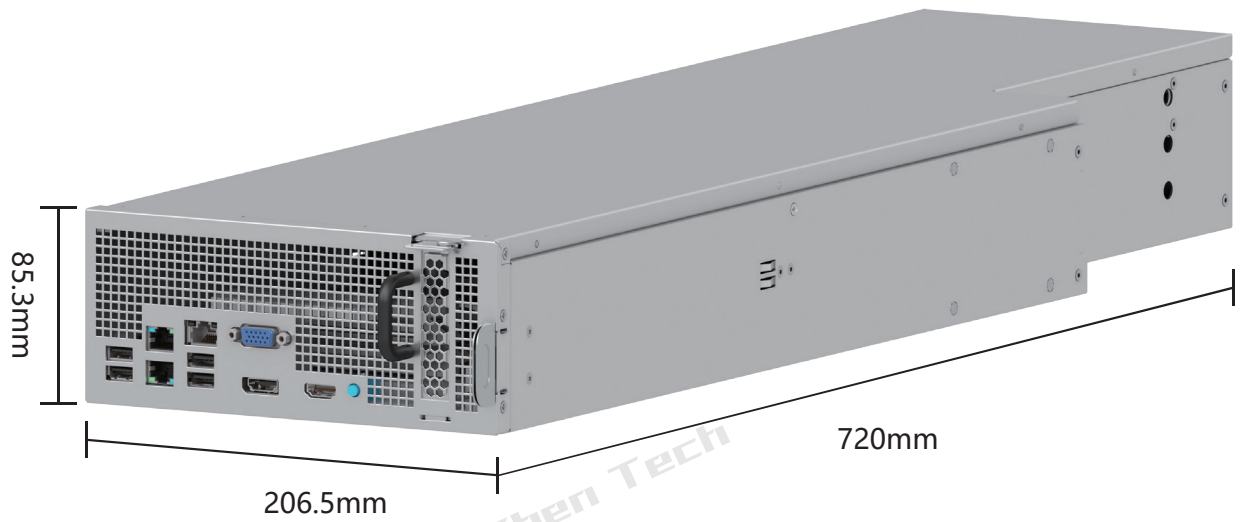


Front View (Dimensions)


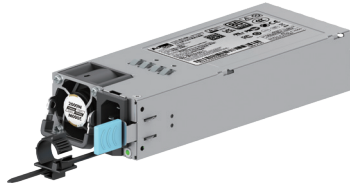
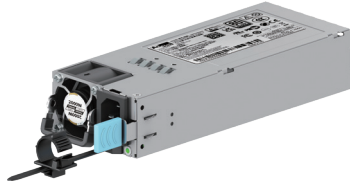


Top View (Dimensions)

4 Server node size



5 Optional accessories

No.	Part Number	Name	Image
01	P/N:0304100006	Slide Rail	
02	P/N:0304010033	The great wall CPRS1300w	
03	P/N:0304010020	The great wall CPRS2000w	
04	P/N:??????????????	PCIE4.0 Adapter cable	
05	P/N:??????????????	Riser Card (ODM Optional)	